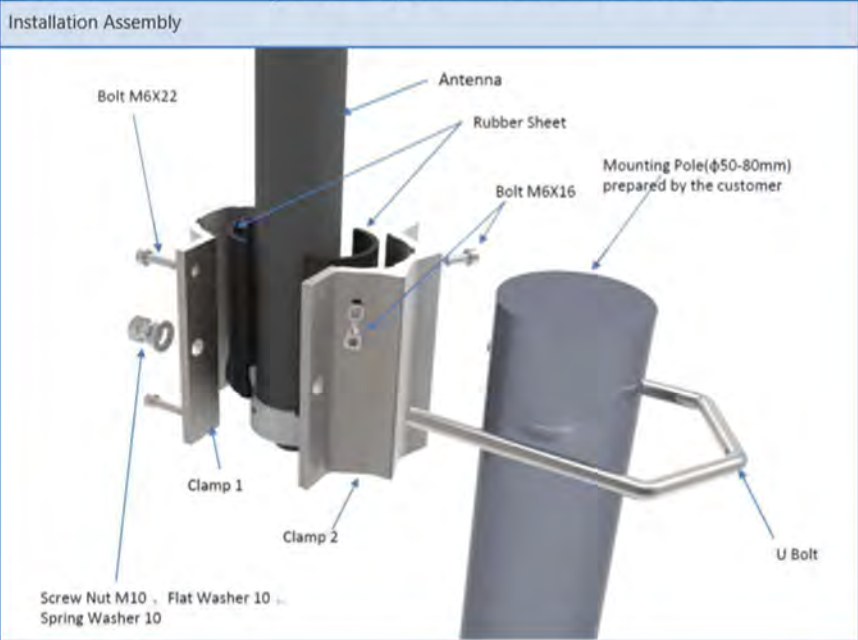


OFFSHORE 700-2700 OMNI DIRECTIONAL OMNIDIRECTIONAL WIDEBAND ANTENNA – 700 – 2700MHZ

- High gain across all cellular bands
- Industrial grade weatherproof fibreglass radome
- Highest practical wideband gain
- Carrier aggregation ready
- Nominal MIMO configuration available
- Wide spectrum design, suits all current and planned networks.

This heavy duty multiband omni-directional antenna sports an extremely wide bandwidth design - operating on two bands 698-960MHz, 1710-2700MHz covering all 2G, 3G, and 4G cellular bands with high gain and high efficiency. Designed to network operator standard, the antenna has a very low VSWR and tightly controlled radiation pattern making it not only the ideal antenna for marine, commercial and industrial applications, but also suitable for broadcast and carrier applications. The extra high gain makes this antenna especially useful for long range applications.

Mechanical/Environmental Specifications	
Construction:	Fibreglass Radome, Aluminium Bracket, Stainless Fixings
Cable:	none
Connector:	N-Type Female (Low-PIM White Bronze)
Wind Rating:	210km/hr
Temperature:	-40°C +60°C
Weight:	3.0kg
Dimensions:	1500 x 52mm (L x Ø)
Mounting	35-80mm Ø pole, minimum 50mm for wind rating.



**GET IN TOUCH
WITH US**

0800 037 5555

contactus@buzzwireless.co.uk
www.buzzwireless.co.uk

Buzz Wireless
Unit 6 Glenmore Business Park,
Blackhill Road,
Holton Heath,
Poole, BH16 6NL

Electrical Specifications	
Frequency Range:	698-960MHz / 1710-2700MHz
Input Impedance:	50Ω
VSWR:	<2.0:1 (<1.8:1 / <1.6:1 typical)
Polarisation:	Vertical Linear
Vertical Beamwidth:	30° (± 5°) / 20° (± 5°)
Horizontal Beamwidth:	360°
Front to Back Ratio:	Not Applicable
Cross Pol Isolation:	Not Applicable
PIM IMD (3rd Order):	Not Applicable
Radiation:	Omnidirectional
Maximum Power:	150Watts

This is one of the few antennas on the market capable of covering the recently auctioned 700 and 2600MHz spectrum, as well as the current 1800MHz 4G, all the while being backwards compatible on all 2G and 3G voice and data networks. This is an ideal antenna for remote telemetry and mobile/semi-mobile the while being backwards compatible on all 2G and 3G voice and data networks. This is an ideal antenna for remote telemetry and mobile/semimobile stations. Unlike some base station antennas which have lossy coaxial cable, this antenna has an integrated N Female connector in its base, allowing for direct attachment of low loss feeder/riser cables. Designed specifically for mast mounting, the antenna's heavy duty aluminium mounting tube can be mounted using the supplied parallel U-bolt clamp.

Test Item	Technical Requirement	Unit	Tested Frequency	Result
Frequency Range	698-960/1710-2700	MHz	Whole frequency band	698-960/1710-2700
VSWR	≤2.0	/	720MHz	1.60
			840MHz	1.80
			960MHz	1.39
			1710MHz	1.28
			2700MHz	1.86
Gain	5	dB	698MHz	4.90
			750MHz	5.92
			829MHz	4.26
			880MHz	7.39
			920MHz	6.83
			960MHz	4.70
			1700MHz	7.42
			1800MHz	8.46
			1900MHz	8.36
			2000MHz	7.37
			2100MHz	9.42
			2200MHz	6.31
			2300MHz	7.88
			2400MHz	8.40
			2500MHz	7.02
			2600MHz	8.03
			2700MHz	8.15
Vertical Beamwidth	25-35 / 15-25	°	698MHz	34.46
			829MHz	31.79
			960MHz	27.10
			1700MHz	23.29
			2100MHz	18.80
			2700MHz	15.17

**GET IN TOUCH
WITH US**

0800 037 5555

contactus@buzzwireless.co.uk
www.buzzwireless.co.uk

Buzz Wireless
Unit 6 Glenmore Business Park,
Blackhill Road,
Holton Heath,
Poole, BH16 6NL